

LEYTON

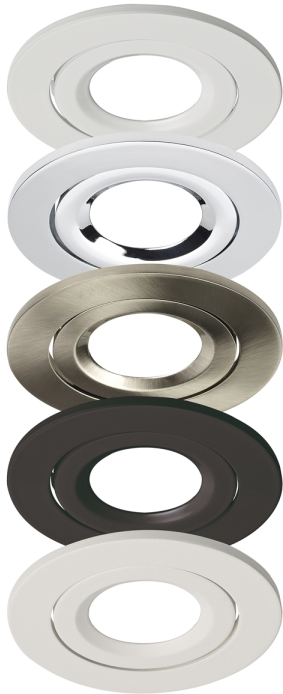
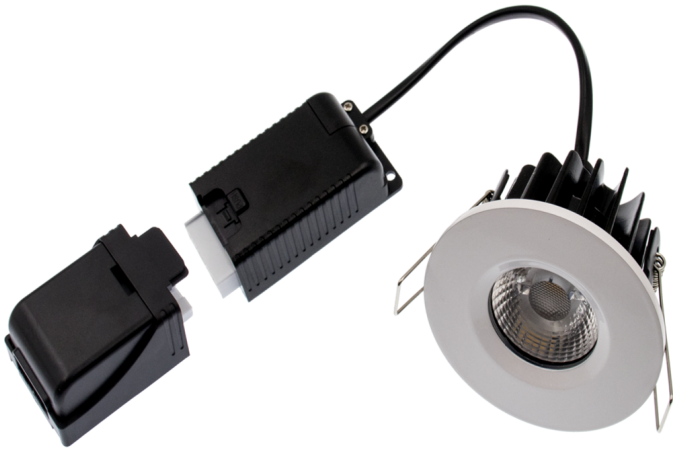
Product Data Sheet

ELAN LED tilt IP20 dimmable fire rated downlight - 4000k

Part No: **ELAN-T-4K**

- High lumen output
- Flicker free & smooth dimming with most standard LED dimmers
- Fast fix connector
- 30,60,90 minute fire rated - timber joist
- Engineered joist tested including i-joist & posi joist -details on request
- 60° Beam Angle
- 0-100% Dimmable
- Bezels supplied separately





ELAN

TILT | HIGH PERFORMANCE
FIRE RATED DOWNLIGHT



Technical Specification

Part No	ELAN-T-4K
Lumens	820
CCT	4000
Colour Temperature	Neutral White
Voltage	240
Wattage	8
CRI	80
IP Rating	20
Dimmable	Y
Lamp Holder	Integrated LED
Beam Angle	60
Depth	56
Diameter	96
Cut Out	82
Class 1 or 2 or 3	II

Unit of sale

1

Price

each