

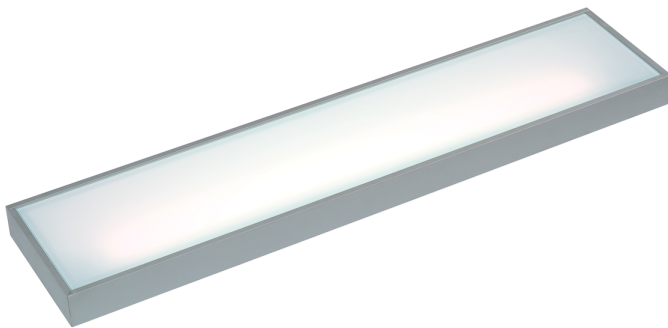
LEYTON

Product Data Sheet

450mm Major LED shelf

Part No: **LSHELF45-LED**

- Flush wall fixing
- Integrated switch
- Max load 3Kg



Technical Specification

Part No	LSHELF45-LED
CCT	4000
Colour Temperature	Neutral White
Finish	Satin Silver
Voltage	240
Wattage	5.8
CRI	80

Dimmable	N
Lamp Holder	Integrated LED
Connector Type	Bare End
Length	450
Width	50
Depth	205
Class 1 or 2 or 3	II
Material / Made From	Aluminium
Unit of sale	1
Price	each